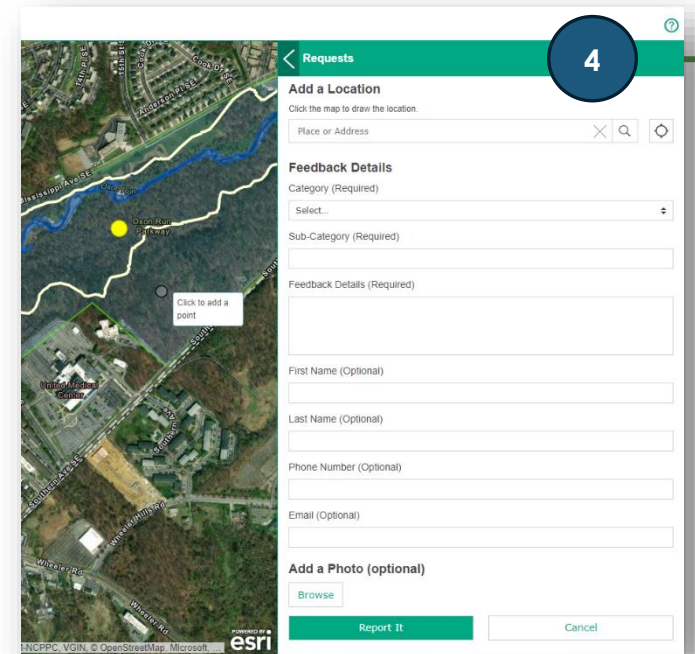
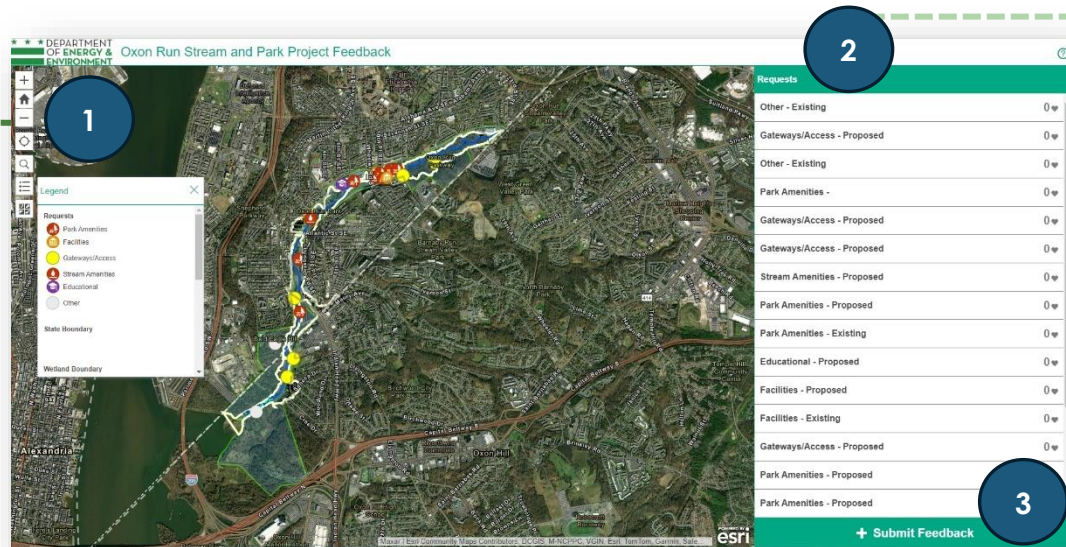







LINK TO APPLICATION: <https://jmt.maps.arcgis.com/apps/CrowdsourceReporter/index.html?appid=dcc6d07a88814db3a5e0a6421554e0e0>

## Desktop



### 1 MAP FUNCTIONALITY

-  Navigate to the full extent of the Oxon Run project.
-  Zoom to current location.
-  Search for an address.
-  View the map legend.
-  Switch the basemap.

### 3 SUBMIT NEW FEEDBACK

Select to submit new feedback items on the map.

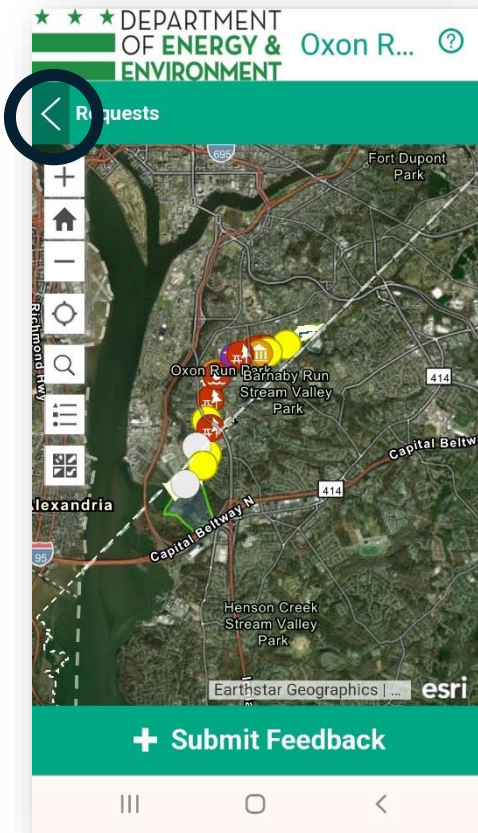


### 2 SUBMITTED FEEDBACK

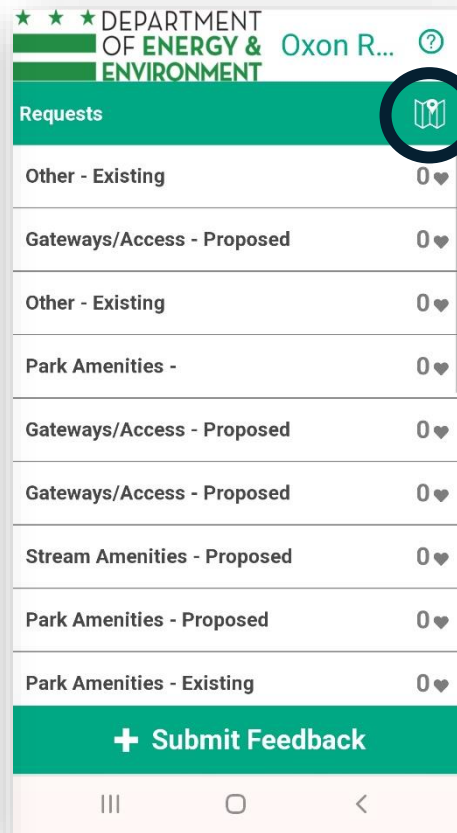
- Select submitted feedback items in the list to:
- Zoom in on the item in the map
  - Upvote or build existing item with comments.

### 4 COMPLETE NEW FEEDBACK FORM

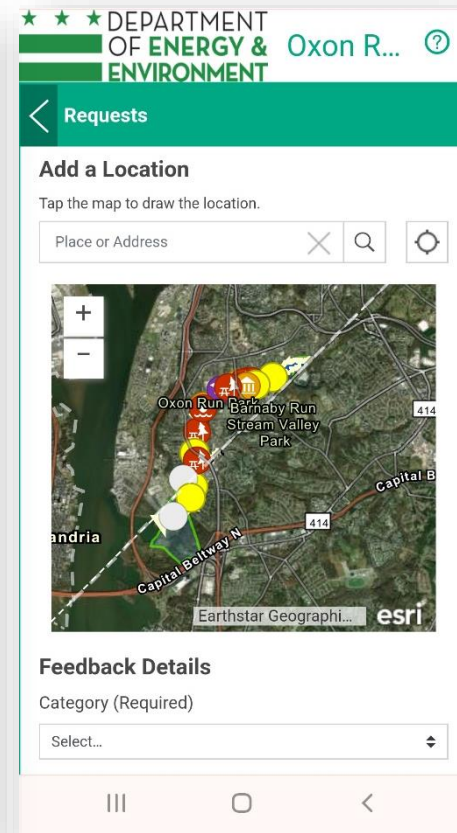
- Type address or zoom in on map and click to add point within project boundary.
- Follow prompts in form to submit details about your feedback.



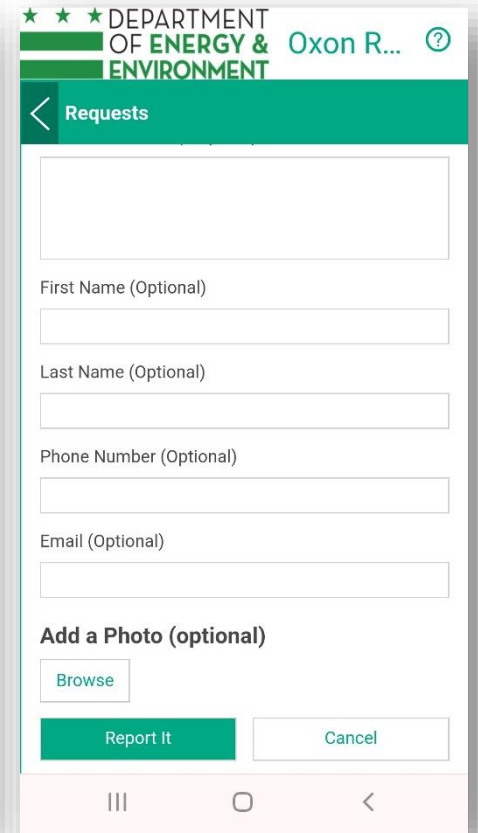
**MAP VIEW**  
Use the highlighted arrow icon to go to existing feedback view.



**SUBMITTED FEEDBACK VIEW**  
Use the highlighted map icon to switch back to map view.



**FEEDBACK FORM VIEW**  
Type address or zoom in on map and tap to add point.



**FEEDBACK FORM VIEW**  
Follow prompts in form to submit details on feedback.

